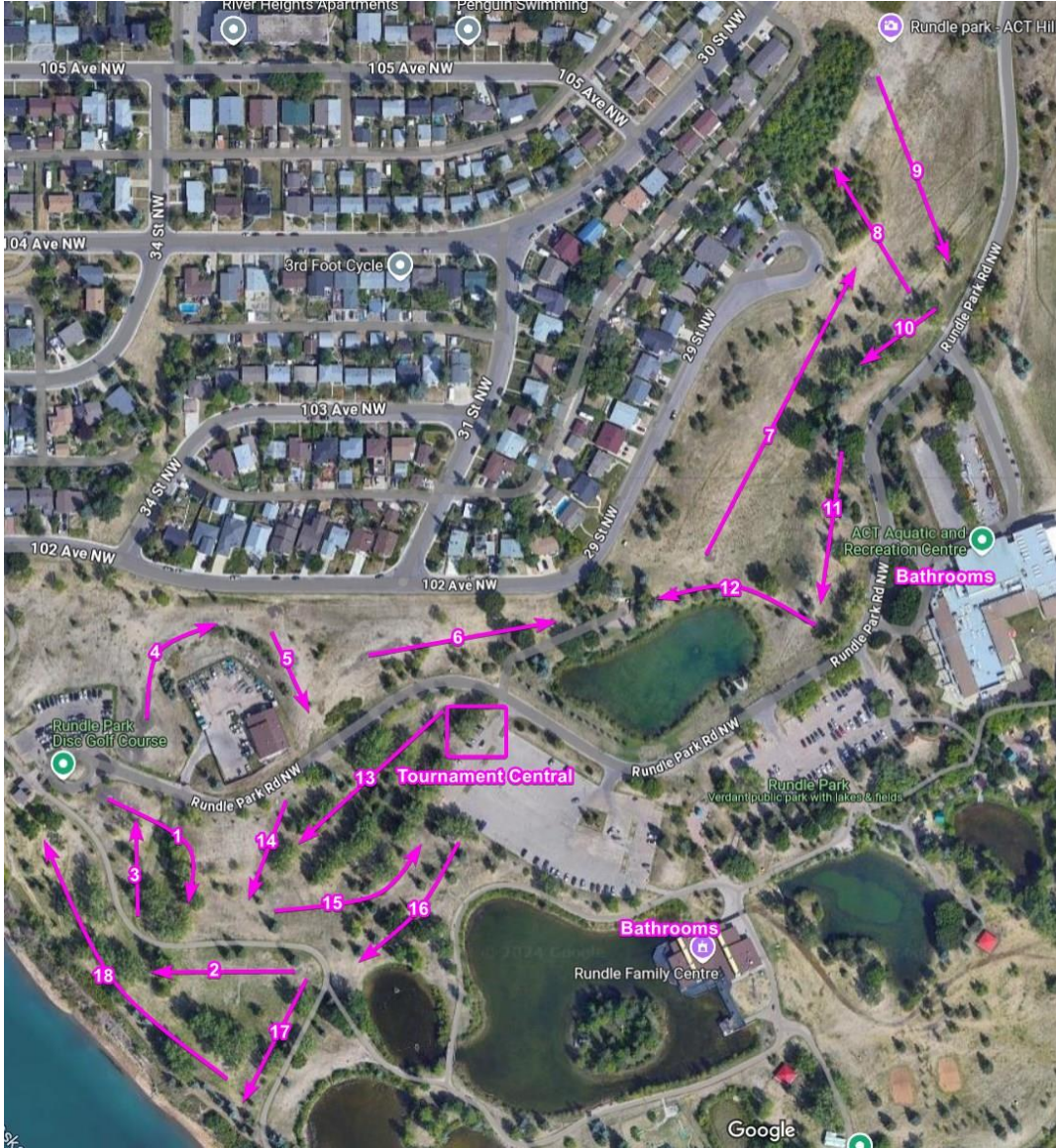


Edmonton Tag Team Championship April 27th, 2024 Rundle Park Edmonton, Alberta Emergency Action Plan



Location of first aid kits	Tournament Central.
Lost person meeting place	Tournament Central.
Muster point(s)	Tournament Central.
Emergency Response Vehicle meeting point	Tournament Central.
Emergency Response Vehicle Route	Rundle Park Road.

Section 1 - Contact Information

Item	Person Responsible	Contact number
Emergency Phone Number	All volunteers and coordinators	9-1-1 for all emergencies
Event coordinator	Brock Ciochetti	780-995-2477
Emergency Response Coordinator	Brock Ciochetti	780-995-2477
First aid onsite contact	Timothy Plamondon	780-691-6181
Muster point lead(s)	Brock Ciochetti/Timothy Plamondon	780-995-2477
Plan prepared by	Brock Ciochetti	780-995-2477
Edmonton Police (non emergency)	All volunteers and coordinators	780-423-4567
AHS Environmental Public Health (Food/Beverage)	All volunteers and coordinators	780-735-1800
EPCOR (Drainage, Hydrants, Power)	All volunteers and coordinators	Drainage & Electrical Emergency: 780-412-4500 Water: 780-412-6800 Natural Gas: 780-420-5585
Poison Control	All volunteers and coordinators	1-800-332-1414
Closest Hospital	All volunteers and coordinators	Royal Alexandra Hospital 10240 Kingsway NW, Edmonton, Alberta
Environment Canada (Weather)	All volunteers and coordinators	1-900-555-5555
Hazardous waste spills	All volunteers and coordinators	1-800-222-6514
Animal Control	All volunteers and coordinators	311
Canadian Mental Health Association	All volunteers and coordinators	211
AHS	All volunteers and coordinators	811

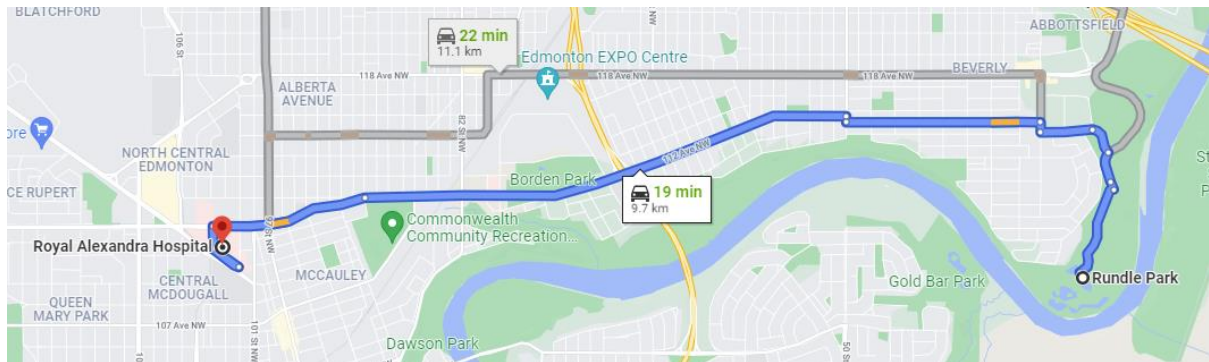
Section 2 - Hazard and risk identification.

Risk	Action Plan	Key Personnel
First Aid - Medical emergencies	A fully stocked first aid kit will be available at each Tournament Central site. On site organisers will determine if the severity of the medical issue warrants calling for further assistance.	Brock Ciochetti - 780-995-2477 Tim Plamondon - 780-691-6181
Extreme weather	Depending on what the extreme weather event may be, tournament participants are to immediately stop play and proceed to the nearest muster point. This can either be mandated by the Tournament Director, or decided by the participants.	Brock Ciochetti - 780-995-2477 Tim Plamondon - 780-691-6181
Lost persons	If it is declared that there is a lost persons, participants should reach out to the Tournament Director as soon as possible.	Brock Ciochetti - 780-995-2477 Tim Plamondon - 780-691-6181
Crime related emergencies	Depending on the severity of the crime, participants will notify either the Tournament Director or 911 of the situation.	Brock Ciochetti - 780-995-2477 911
Wildlife encounter	Should any participants encounter wildlife or recognize any potential wildlife hazards, they are to notify the Tournament Director as soon as possible.	Brock Ciochetti 780-995-2477 Tim Plamondon - 780-691-6181

Section 3 - First aid

1. Fully stocked First aid kits will be available at Tournament Central.
2. Cell phones will be active at Tournament Central.
3. Coordinators and Organisers with Emergency Level First Aid will be available on site.
4. Coordinators and Organizers will determine if the severity of the first aid requires escalation.
5. This Emergency Action Plan will be delivered to each participant prior to the tournament so that each participant knows what the process is for first aid.
6. Emergency access routes are listed below:

Directions to Royal Alexandra Hospital from Rundle Park



- Take Rundle Park Road
- Turn Left at fork to continue on Rundle Park Road
- Continue onto 113 ave
- Turn right on 34st
- First left on 114 ave
- Drive 1.6km and turn right onto 50st
- First left onto 112 ave
- Drive 4.2km, 112 ave becomes 111 ave
- Turn left into hospital parking lot